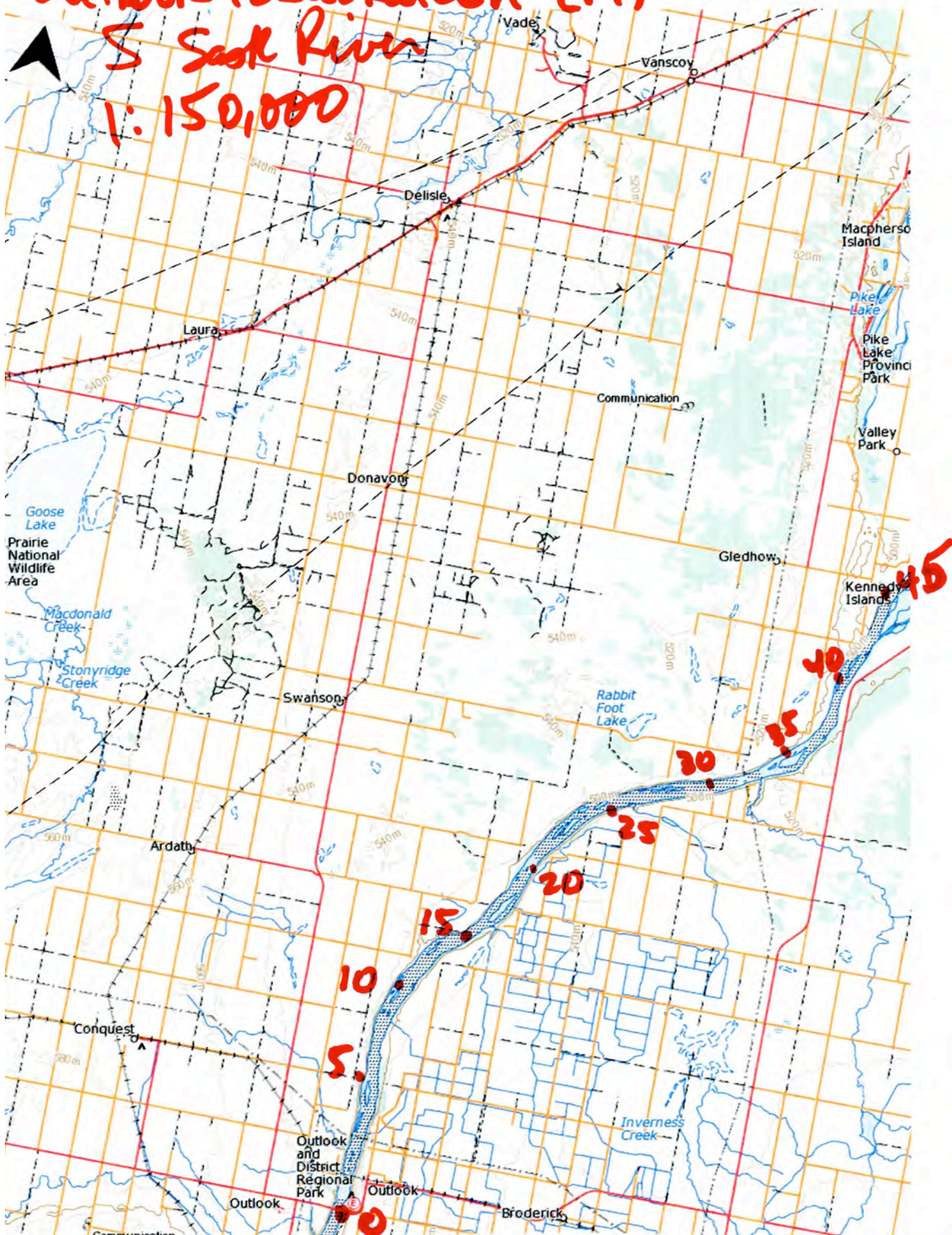


# Outlook to Saskatoon (M)

## S Sask River

### 1:150,000

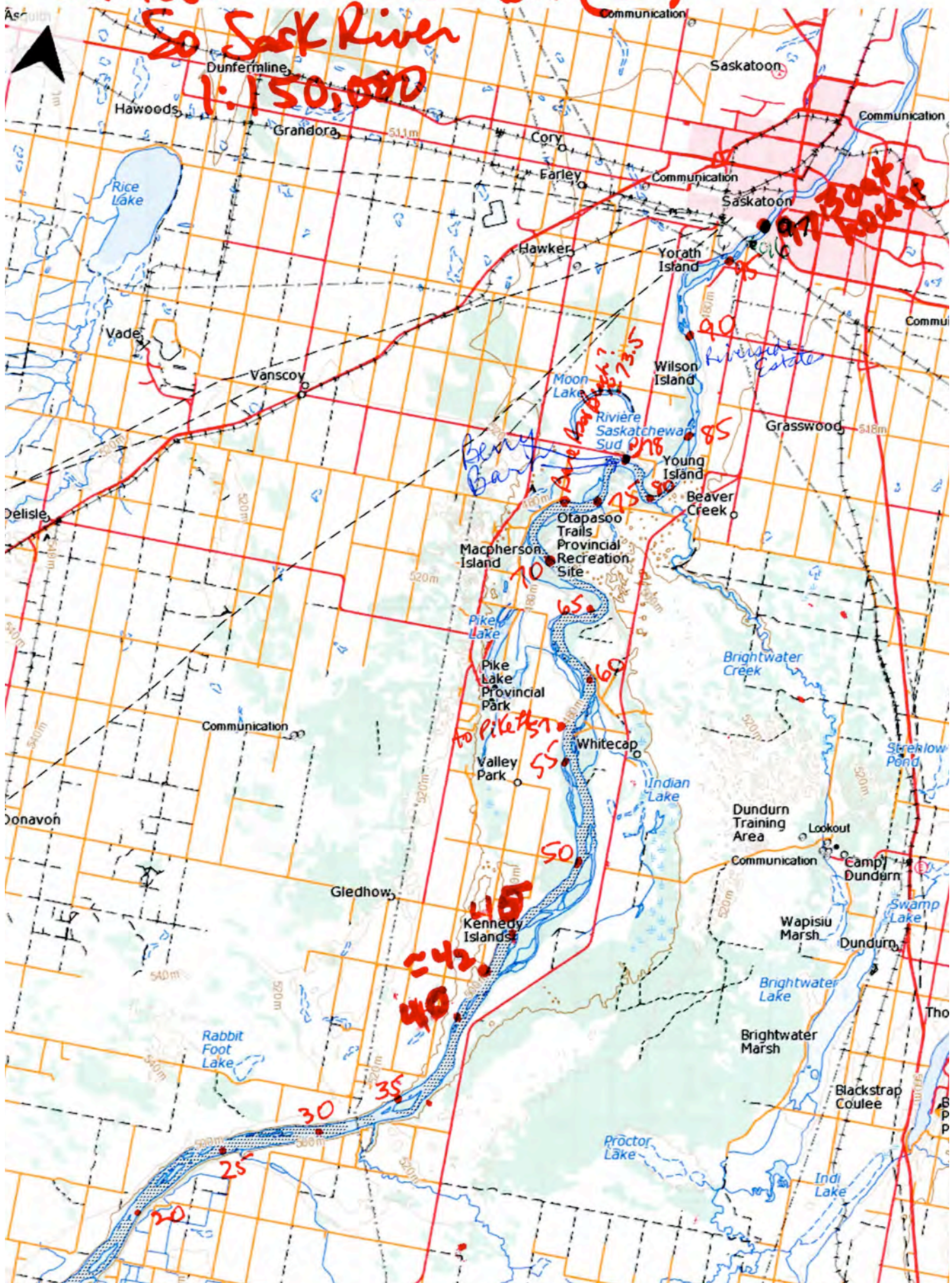




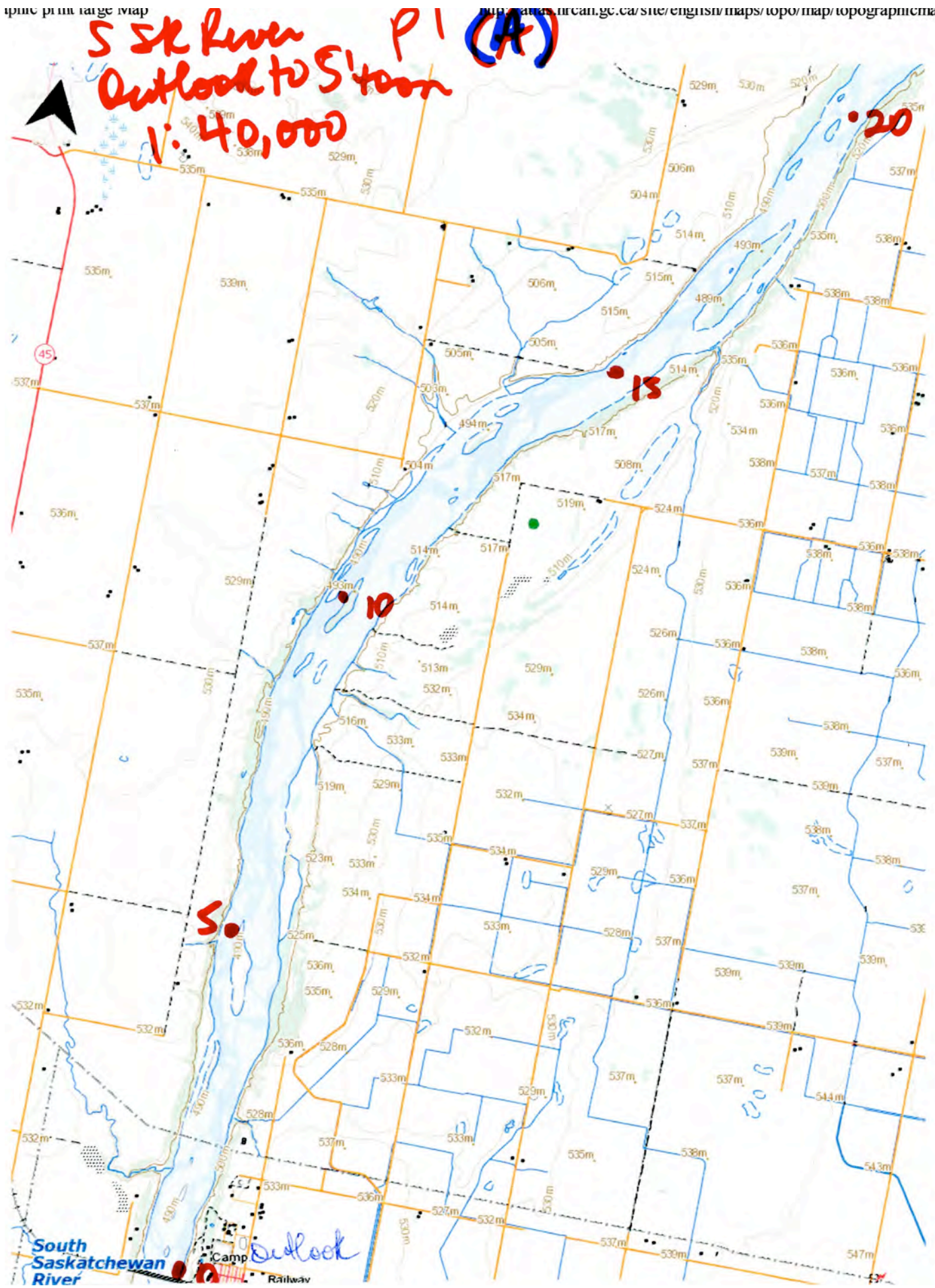
# Outlook to Saskatoon (B)

So Sack River

1:150,000





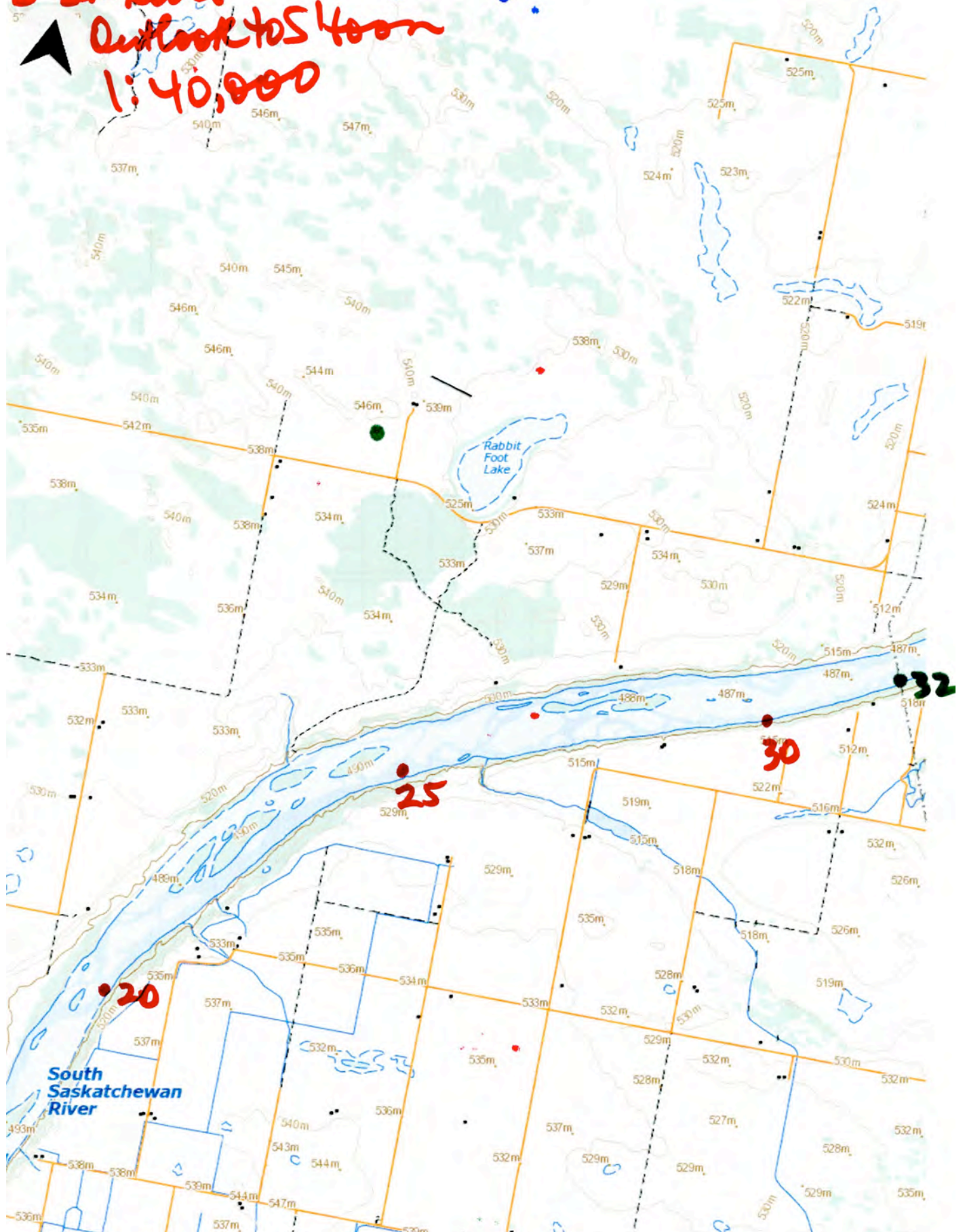




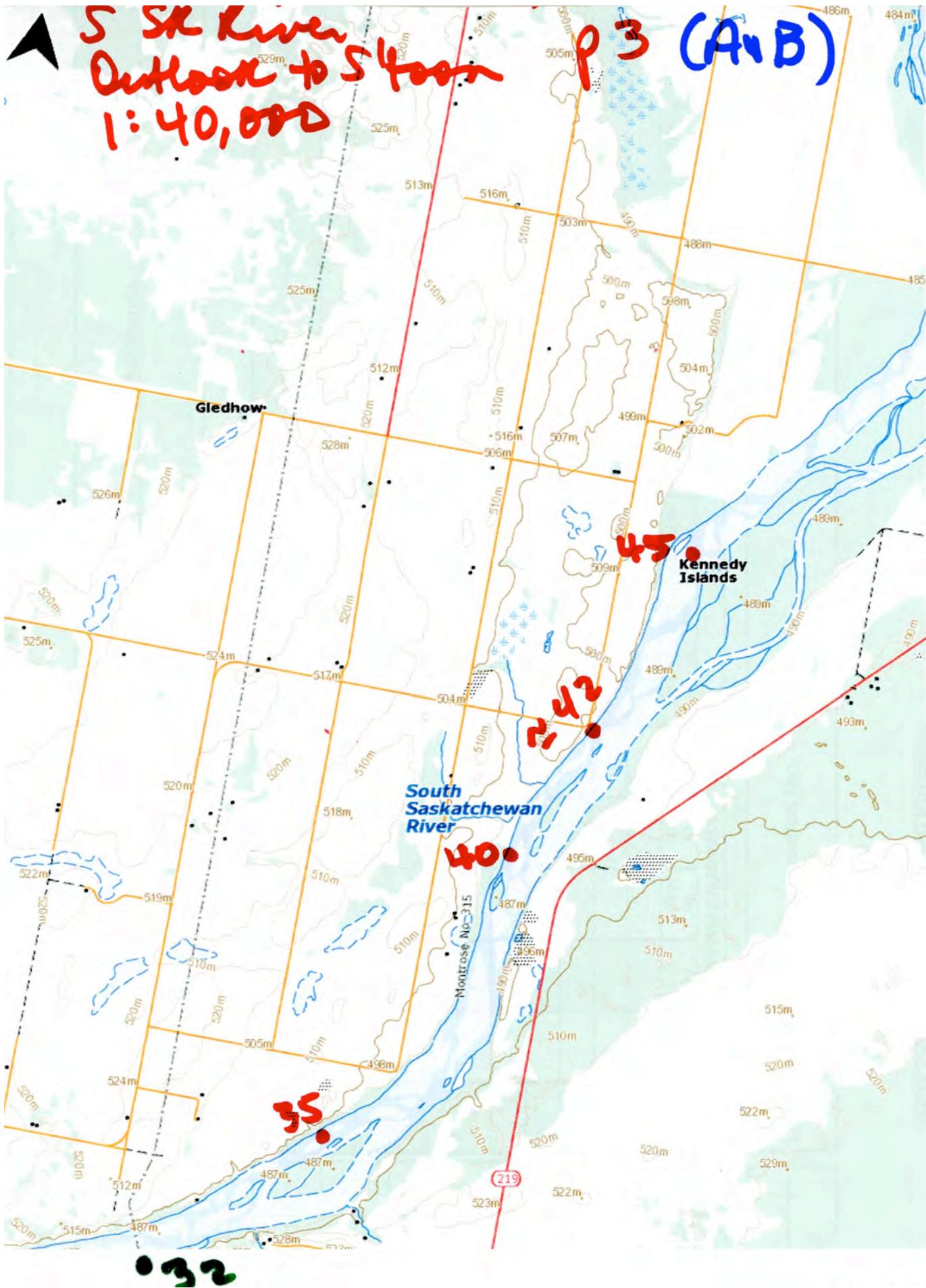
S SR River P2 (A+B)



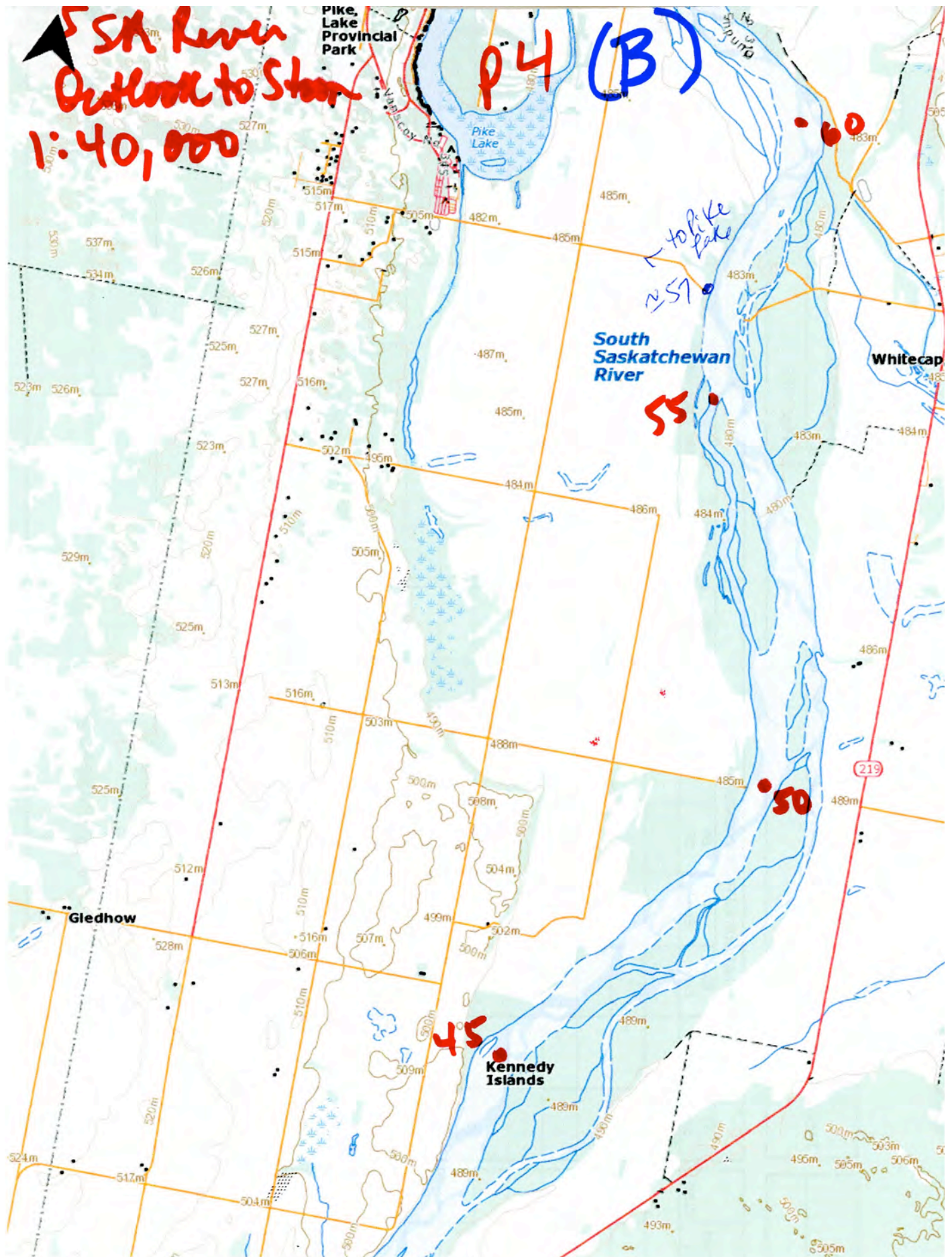
Outlook to S 4000  
1:40,000













▲ S Sk River  
Outlook to S' town  
1: 40,000

P 5 (B)

Burny Burn  
~ 78

80

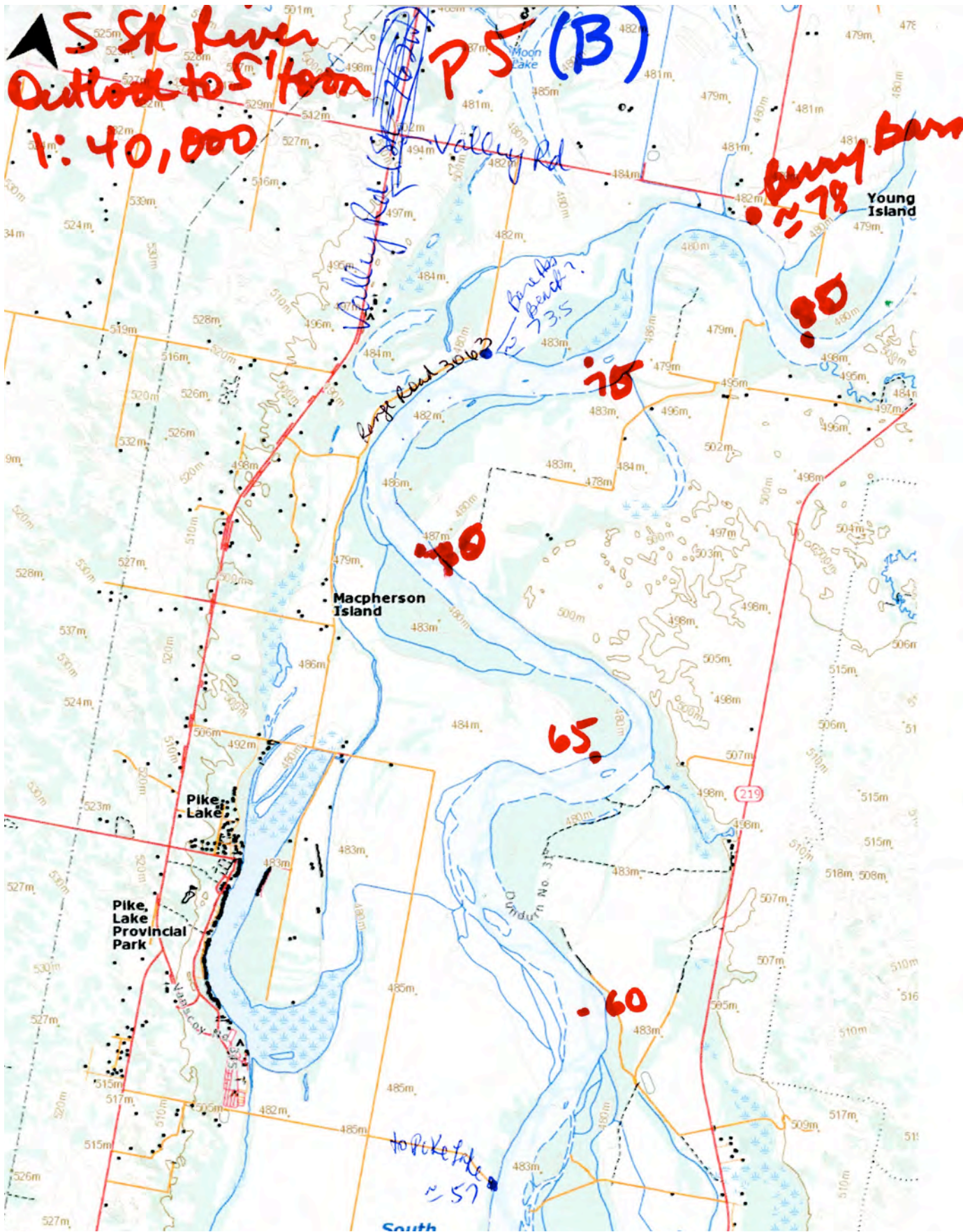
75

40

65

60

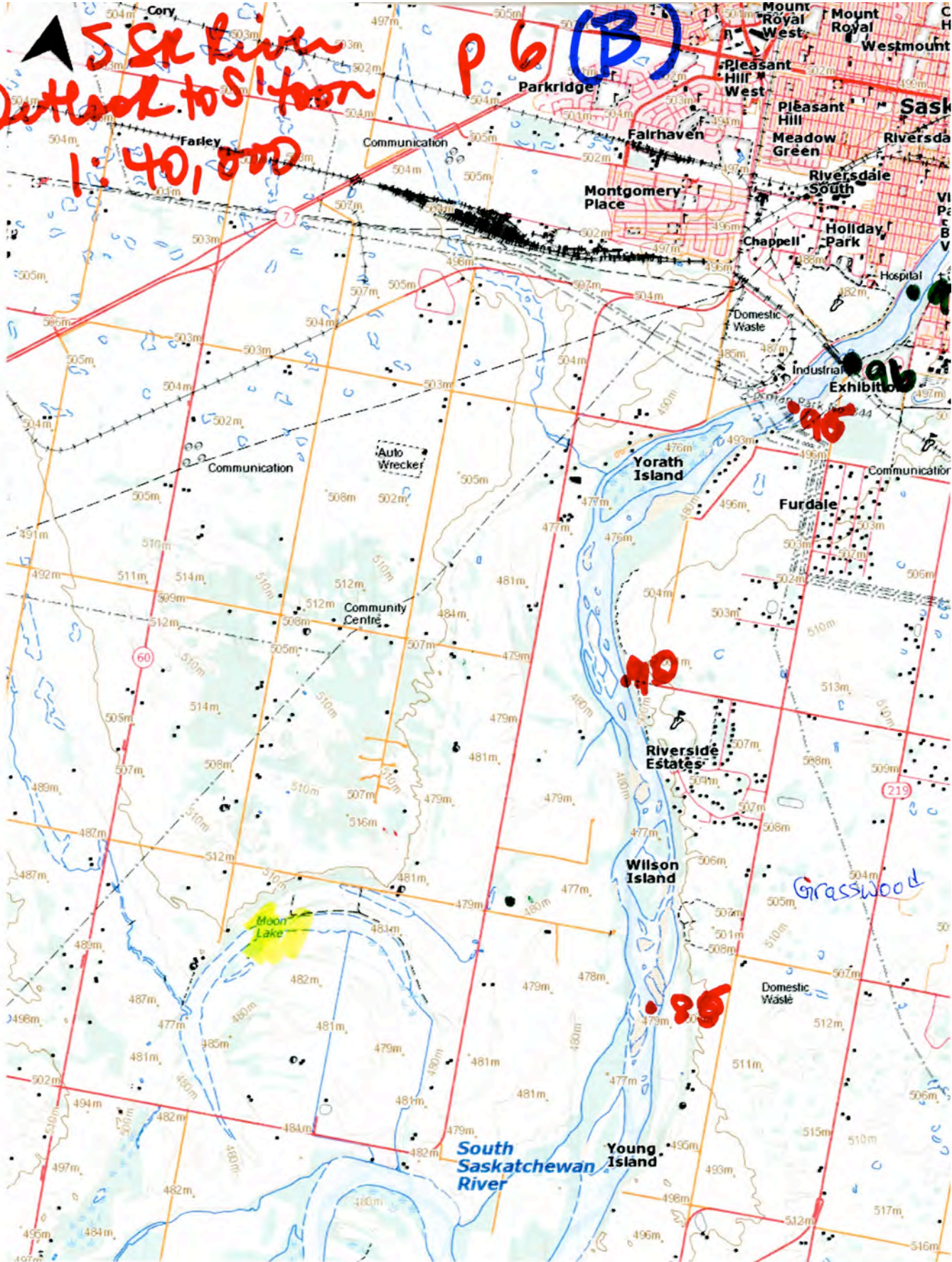
1000 ft  
~ 57





5 SR River  
Outlook to S 1 foot  
1:40,000

P 6 (B)



80°